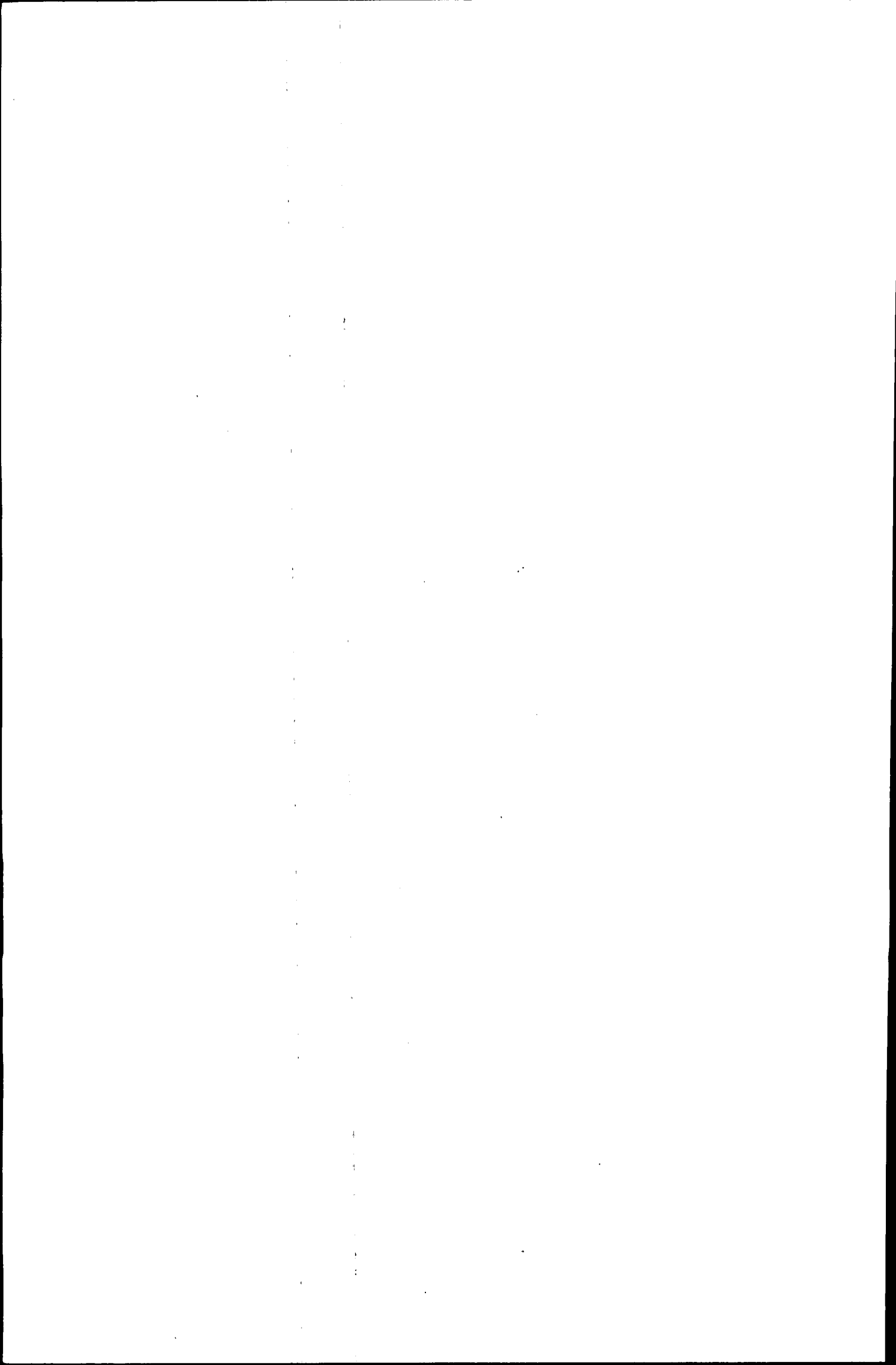


NOON 5 FEBRUARY 1982

**THE LABOUR FORCE
EDUCATIONAL ATTAINMENT
AUSTRALIA
FEBRUARY 1981**

R. J. CAMERON
Australian Statistician



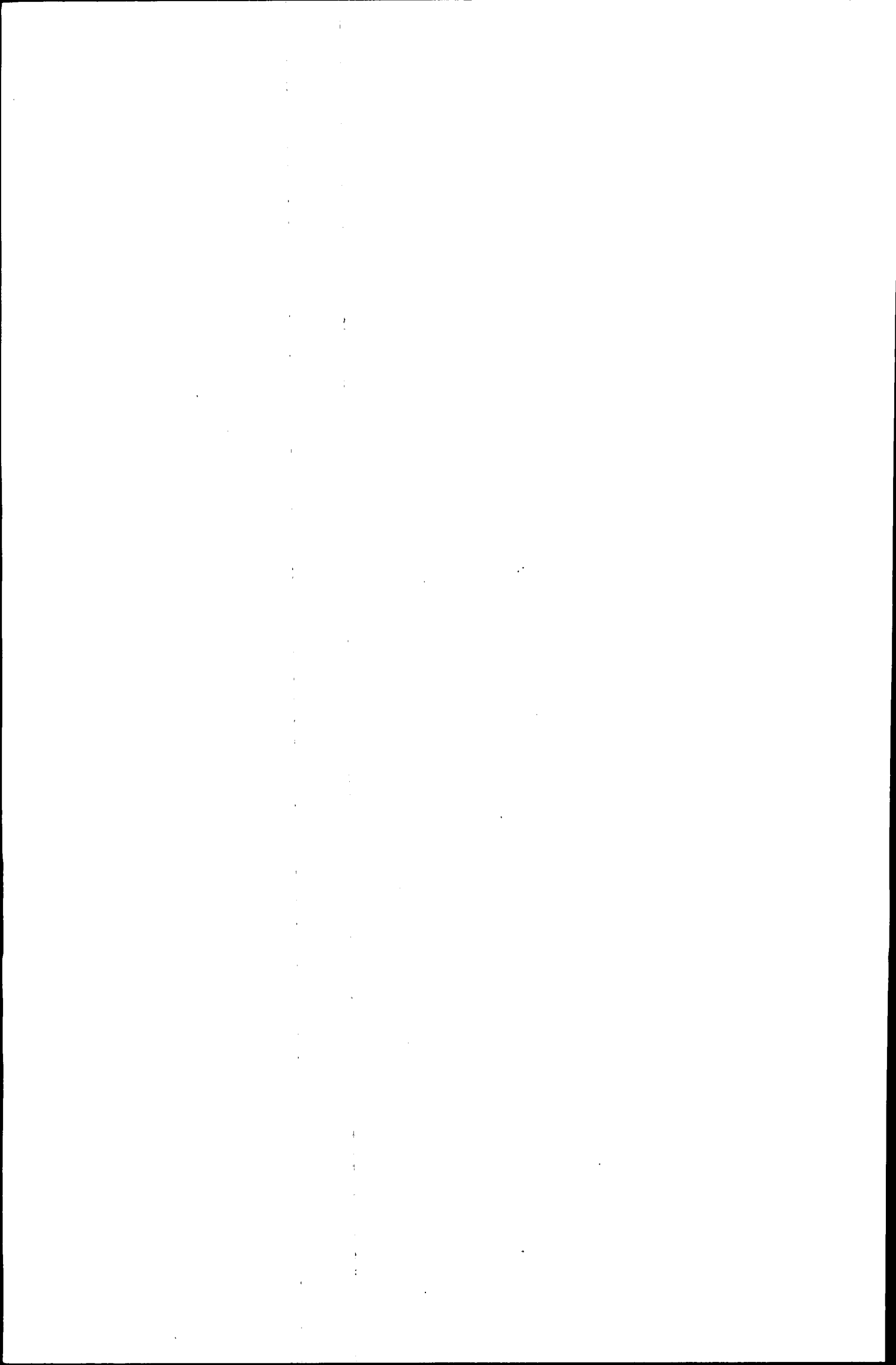
PHONE INQUIRIES *for more information about these statistics*—contact Ms Susan Purcell on Canberra (062) 52 6503 or any of our State offices.

other inquiries including copies of publications—contact Information Services on Canberra (062) 52 6627 or in any of our State offices.

MAIL INQUIRIES *write to* Information Services, ABS, P.O. Box 10, Belconnen, A.C.T. 2616 or any of our State offices.

CONTENTS

<i>Table</i>		<i>Page</i>
..	Main features	1
..	Explanatory notes	1
	Persons in the labour force	
	Educational attainment—	
1.	Employment status, 1979, 1980, 1981	3
2.	Employment status and full-time or part-time status	5
3.	States and Territories and employment status	6
4.	Birthplace and period of arrival in Australia	7
5.	Industry	8
6.	Occupation	9
7.	Industry by occupation	10
	Main field of study—	
8.	Persons with a degree or equivalent qualification : age	11
9.	Persons with a trade or technical level qualification : employment status and age	12
	Employed persons	
10.	Educational attainment and age	13
	Unemployed persons	
	Educational attainment—	
11.	Duration of current period of unemployment	14
12.	Age and unemployment rate	15
..	Technical note	16



MAIN FEATURES

Note: Survey estimates are subject to sampling variability, as explained in paragraph 10 of the Explanatory notes.

Of the 6,750,000 persons in the labour force in February 1981:

38.5 per cent (2,601,700 persons) had a post-school qualification of whom
518,100 had a degree or equivalent
2,027,600 had a trade or technical level qualification.

60.1 per cent (4,058,400 persons) did not have a post-school qualification. Of these
799,800 had attended the highest level of secondary school available.
2,191,500 had left school at age 15 years or under.

1.3 per cent (89,900 persons) were still at school.

Percentages with post-school qualifications were:

Males	40.8
Females	34.6

Employed persons	39.6
Unemployed persons	22.9

Unemployment rates and average duration of unemployment were:

	Unemploy- ment rate (per cent)	Duration of unemploy- ment (weeks)
Persons with post-school qualifications	3.7	22.2
Persons without post-school qualifications	7.5	34.8

EXPLANATORY NOTES

Introduction

In February 1981 a survey, based on the monthly population survey, was conducted throughout Australia in order to obtain information about the highest educational qualifications attained by persons in the labour force. For persons with post-school qualifications, the information included the field of study, and for those who did not complete their schooling, it included the age at which they had left school. Results of similar surveys, the first conducted in 1979, were published in previous issues of this publication.

2. The survey was based on a multi-stage area sample of private dwellings (about 22,500 houses, flats, etc.) and non-private dwellings (hotels, motels, etc.) and covered about one half of one per cent of the population of Australia. The information was obtained from the occupants of selected dwellings by carefully chosen and specially trained interviewers, the interviews being conducted during the two weeks beginning on Monday 9 February 1981.

Scope

3. The survey included all persons aged fifteen years and over except:

- members of the permanent defence forces;
- certain diplomatic personnel of overseas governments, customarily excluded from census and estimated populations;
- overseas visitors holidaying in Australia;
- members of non-Australian defence forces (and their dependants) stationed in Australia; and
- boarding school students, some patients in hospitals and sanatoria and inmates of reformatories, gaols, etc.

Definitions

4. The labour force category to which a person is assigned depends on his *actual activity* (i.e. whether working, looking for work, etc.) during a specified week known as *the survey week* which is the week immediately preceding that in which the interview takes place. Definitions of the principal labour force categories appearing in this publication are given in *The Labour Force, Australia* (6203.0), but it should be noted that there are slight differences in the estimates for labour force categories shown in these publications. This is due to the different sizes of the samples used and the inability to obtain from a small number of persons the additional information required for the educational qualifications survey. Although the estimation procedures take account of these factors, estimates for some characteristics will be affected.

5. *Persons with a post-school qualification* are those who had left school and answered 'Yes' to the question: 'Since leaving school have you obtained a certificate, diploma, degree or any other qualification?'

6. *Classification of post-school qualifications.* Respondents indicated which one of the following groups best described their highest qualification:

- Degree or equivalent:* a bachelor degree (including honours), a graduate or post-graduate diploma, masters degree or a doctorate;

- (b) *Trade, technical*: completion of an approved trade/technician apprenticeship or training course, other certificate or diploma in secretarial or business studies, administration, teaching, nursing, etc.;
- (c) *Other*: completion of other post-secondary education e.g. adult education, preparatory/bridging course or hobby course.

7. *Classification of field of study*. Respondents with a degree, trade or technical qualification (i.e. (a) or (b) in paragraph 6) indicated the field of study for their highest qualification (See Tables 8 and 9).

8. *Highest level of secondary school available* refers to the highest level of secondary schooling (or equivalent) offered by the education system at the time the respondent left school.

9. *Persons in the labour force but still at school* are those who, although attending school full time, had a full-time or part-time job or were actively seeking full-time or part-time work.

Reliability of the estimates

10. Since the estimates in this publication are based on information obtained from occupants of a sample of dwellings they are subject to sampling variability; that is they may differ from the figures that would have been produced if all dwellings had been included in the survey. More information on this topic will be found in the Technical note.

Related publications

11. Other ABS publications which may be of interest include:

The Labour Force, Australia (6203.0)—issued monthly

Transition from Education to Work (Including leavers from schools, universities and other educational institutions), Australia, May 1981 (6227.0)

12. Current publications produced by the ABS are listed in the *Catalogue of Publications, Australia* (1101.0). The ABS also issues, on Tuesdays and Fridays, a *Publications Advice* (1105.0) which lists publications to be released in the next few days. The Catalogue and Publications Advice are available from any ABS office.

Symbols and other usages

* subject to sampling variability too high for most practical uses. See paragraph 10 above.
n.e.c. not elsewhere classified

13. Because figures have been rounded, discrepancies may occur between sums of the component items and totals.

TABLE 1. PERSONS IN THE LABOUR FORCE : EDUCATIONAL ATTAINMENT AND EMPLOYMENT STATUS, FEBRUARY 1979, 1980 AND 1981

Educational attainment	Employed			Unemployed			Total labour force			Unemployment Rate		
	1979	1980	1981	1979	1980	1981	1979	1980	1981	1979	1980	1981
—per cent—												
MALES												
With post-school qualifications	40.4	40.5	42.0	22.1	22.0	20.1	39.3	39.5	40.8	3.3	3.1	2.6
Degree or equivalent	8.0	7.9	8.7	2.7	4.7	4.0	7.7	7.7	8.5	2.0	3.3	2.5
Trade, technical level	31.7	32.1	32.6	18.8	16.5	16.0	30.9	31.2	31.7	3.5	2.9	2.7
Other	0.7	0.6	0.7	*	*	*	0.7	0.6	0.7	*	*	*
Without post-school qualifications	58.9	58.7	57.2	73.6	74.0	75.5	59.7	59.5	58.2	7.2	6.8	6.8
Attended highest level of secondary school available	11.3	11.4	11.7	12.8	9.9	12.7	11.4	11.4	11.7	6.5	4.8	5.7
Did not attend highest level of secondary school available and left at age—												
18 years or over	0.7	0.8	0.6	*	*	*	0.7	0.8	0.7	*	*	*
16 or 17 years	13.0	13.5	13.1	19.2	22.4	20.4	13.4	14.0	13.5	8.3	8.8	8.0
14 or 15 years	27.6	27.3	26.5	34.4	36.8	35.4	28.0	27.8	27.0	7.1	7.3	6.9
13 years or under	6.0	5.3	5.1	6.2	3.7	5.3	6.0	5.2	5.1	6.0	3.9	5.5
Total	47.3	46.9	45.3	60.4	64.0	62.6	48.1	47.8	46.2	7.3	7.4	7.1
Never attended school	0.2	0.3	0.2	*	*	*	0.2	0.3	0.2	*	*	*
Still at school	0.7	0.8	0.8	4.3	4.0	4.4	1.0	1.0	1.0	26.1	22.3	23.4
Total	100.0	100.0	100.0	100.0	100.0	100.0	100.0	100.0	100.0	5.8	5.5	5.3
MARRIED FEMALES(a)												
With post-school qualifications	31.7	33.0	36.0	30.7	28.1	35.8	31.7	32.7	36.0	5.9	5.0	5.2
Degree or equivalent	5.0	5.0	6.0	*	*	7.1	4.8	4.8	6.1	*	*	6.0
Trade, technical level	25.7	27.1	28.9	27.5	26.3	26.2	25.8	27.0	28.8	6.4	5.6	4.7
Other	1.0	0.9	1.0	*	*	*	1.0	0.9	1.1	*	*	*
Without post-school qualifications(b)	68.2	67.0	64.0	69.3	71.9	64.2	68.3	67.3	64.0	6.1	6.2	5.2
Attended highest level of secondary school available	7.6	7.9	8.0	7.8	7.4	8.0	7.6	7.8	8.0	6.2	5.4	5.2
Did not attend highest level of secondary school available and left at age—												
18 years or over	0.6	0.7	0.5	*	*	*	0.6	0.7	0.5	*	*	*
16 or 17 years	14.5	15.7	15.0	12.2	17.6	16.4	14.4	15.8	15.1	5.2	6.4	5.6
14 or 15 years	38.7	36.4	34.6	39.5	39.7	32.6	38.8	36.6	34.5	6.2	6.3	4.9
13 years or under	6.5	6.0	5.6	9.3	*	6.4	6.7	6.0	5.6	8.5	*	5.9
Total	60.4	58.9	55.7	61.5	64.2	56.2	60.4	59.2	55.7	6.2	6.3	5.2
Still at school	*	*	*	*	*	*	*	*	*	*	*	*
Total	100.0	100.0	100.0	100.0	100.0	100.0	100.0	100.0	100.0	6.1	5.8	5.2

(a) Includes separated. (b) Includes persons who never attended school.

TABLE 1. PERSONS IN THE LABOUR FORCE : EDUCATIONAL ATTAINMENT AND EMPLOYMENT STATUS, FEBRUARY 1979, 1980 AND 1981—continued

Educational attainment	Employed			Unemployed			Total labour force			Unemployment Rate		
	1979	1980	1981	1979	1980	1981	1979	1980	1981	1979	1980	1981
	—per cent—											
	ALL FEMALES											
With post-school qualifications	31.3	32.7	35.3	23.0	21.8	26.1	30.5	31.7	34.6	7.0	6.0	6.0
Degree or equivalent	5.2	5.4	6.4	*	*	5.4	5.0	5.1	6.3	*	*	6.9
Trade, technical level	25.2	26.3	27.9	18.9	18.7	18.6	24.7	25.6	27.1	7.1	6.4	5.5
Other	0.8	1.0	1.1	*	*	*	0.9	1.0	1.1	*	*	*
Without post-school qualifications	67.0	65.8	63.0	73.4	73.8	69.2	67.6	66.5	63.5	10.1	9.7	8.7
Attended highest level of secondary school available	11.8	11.6	12.0	13.5	13.7	12.4	12.0	11.8	12.0	10.4	10.2	8.3
Did not attend highest level of secondary school available and left at age—												
18 years or over	0.6	0.6	0.7	*	*	*	0.6	0.7	0.7	*	*	*
16 or 17 years	16.6	17.9	16.9	19.1	22.2	23.9	16.8	18.3	17.5	10.6	10.6	10.9
14 or 15 years	33.0	31.1	29.2	35.3	31.8	29.2	33.2	31.1	29.2	9.9	8.9	8.0
13 years or under	4.8	4.4	4.0	4.1	4.2	2.5	4.7	4.3	3.8	8.2	8.5	5.3
Total	54.9	54.0	50.8	59.9	59.3	56.3	55.4	54.5	51.2	10.1	9.5	8.8
Never attended school	*	*	0.2	*	*	*	*	0.2	0.2	*	*	*
Still at school	1.8	1.6	1.7	3.7	4.5	4.8	1.9	1.8	1.9	17.8	21.4	19.8
Total	100.0	100.0	100.0	100.0	100.0	100.0	100.0	100.0	100.0	9.3	8.7	8.0
	PERSONS											
With post-school qualifications	37.2	37.7	39.6	22.5	21.9	22.9	36.1	36.6	38.5	4.4	4.0	3.7
Degree or equivalent	7.0	7.0	7.9	2.7	3.5	4.6	6.7	6.7	7.7	2.8	3.5	3.8
Trade, technical level	29.4	30.0	30.9	18.9	17.6	17.2	28.6	29.2	30.0	4.7	4.0	3.6
Other	0.7	0.8	0.8	*	*	*	0.7	0.8	0.8	*	*	*
Without post-school qualifications	61.7	61.2	59.3	73.5	73.9	72.5	62.6	62.1	60.1	8.3	8.0	7.5
Attended highest level of secondary school available	11.5	11.5	11.8	13.1	11.7	12.6	11.6	11.5	11.8	8.0	6.8	6.7
Did not attend highest level of secondary school available and left at age—												
18 years or over	0.6	0.7	0.6	*	*	1.1	0.7	0.8	0.7	*	*	9.9
16 or 17 years	14.3	15.1	14.4	19.2	22.3	22.0	14.6	15.6	14.9	9.3	9.6	9.2
14 or 15 years	29.5	28.6	27.5	34.8	34.4	32.5	29.9	29.0	27.8	8.3	7.9	7.3
13 years or under	5.6	5.0	4.7	5.2	4.0	4.0	5.5	4.9	4.7	6.7	5.4	5.4
Total	50.0	49.4	47.3	60.2	61.7	59.6	50.7	50.3	48.1	8.4	8.2	7.8
Never attended school	0.2	0.3	0.2	*	*	*	0.2	0.3	0.2	*	*	*
Still at school	1.1	1.1	1.1	4.0	4.3	4.6	1.3	1.3	1.3	21.6	21.8	21.5
Total	100.0	100.0	100.0	100.0	100.0	100.0	100.0	100.0	100.0	7.1	6.7	6.3

TABLE 2. PERSONS IN THE LABOUR FORCE : EDUCATIONAL ATTAINMENT, EMPLOYMENT STATUS AND FULL-TIME OR PART-TIME STATUS, FEBRUARY 1981 ('000)

Educational attainment	Employed			Unemployed			Total labour force		
	Full-time	Part-time	Total	Looking for full-time work	Looking for part-time work	Total	Full-time	Part-time	Total
MALES									
With post-school qualifications	1,644.7	58.4	1,703.1	43.6	*	45.4	1,688.3	60.2	1,748.5
Degree or equivalent	333.0	20.3	353.4	7.8	*	8.9	340.8	21.5	362.3
Trade, technical level	1,285.6	36.4	1,322.0	35.5	*	36.1	1,321.0	37.1	1,358.1
Other	26.0	*	27.7	*	*	*	26.4	*	28.1
Without post-school qualifications	2,217.0	104.6	2,321.5	163.3	6.9	170.2	2,380.3	111.4	2,491.7
Attended highest level of secondary school available	444.4	30.1	474.4	25.7	*	28.7	470.1	33.1	503.2
Did not attend highest level of secondary school available and left at age—									
18 years or over	24.5	*	24.9	*	*	*	27.8	*	28.3
16 or 17 years	511.1	19.1	530.2	45.6	*	46.0	556.7	19.5	576.2
14 or 15 years	1,031.0	45.2	1,076.2	77.4	*	79.7	1,108.5	47.5	1,156.0
13 years or under	197.9	9.6	207.5	10.8	*	12.0	208.7	10.8	219.5
Total	1,764.5	74.4	1,838.9	137.2	*	141.0	1,901.7	78.2	1,979.9
Never attended school	8.1	*	8.2	*	*	*	8.5	*	8.6
Still at school	*	30.4	32.4	4.6	5.3	9.9	6.7	35.6	42.3
Total	3,863.7	193.4	4,057.1	211.5	13.9	225.5	4,075.3	207.3	4,282.5
FEMALES									
With post-school qualifications	554.5	247.4	801.9	39.0	12.3	51.3	593.5	259.7	853.2
Degree or equivalent	108.8	36.3	145.1	8.9	*	10.7	117.7	38.1	155.8
Trade, technical level	430.3	202.5	632.8	27.3	9.4	36.7	457.6	211.9	669.5
Other	15.4	8.6	24.0	*	*	*	18.2	9.8	27.9
Without post-school qualifications	923.0	507.5	1,430.5	109.1	27.1	136.2	1,032.1	534.6	1,566.7
Attended highest level of secondary school available	186.0	86.2	272.2	21.3	*	24.5	207.3	89.4	296.6
Did not attend highest level of secondary school available and left at age—									
18 years or over	11.2	4.6	15.8	*	*	*	12.2	4.9	17.1
16 or 17 years	271.9	112.0	383.8	38.4	8.7	47.1	310.2	120.7	430.9
14 or 15 years	391.0	272.6	663.6	43.6	14.0	57.6	434.6	286.6	721.2
13 years or under	58.6	31.3	89.9	*	*	5.0	62.6	32.2	94.8
Total	732.7	420.4	1,153.2	87.0	23.9	110.9	819.7	444.3	1,264.0
Never attended school	*	*	5.2	*	*	*	5.2	*	6.1
Still at school	*	37.0	38.2	*	6.4	9.4	*	43.5	47.5
Total	1,478.6	791.9	2,270.5	151.1	45.8	196.9	1,629.7	837.8	2,467.5
PERSONS									
With post-school qualifications	2,199.2	305.8	2,505.0	82.6	14.1	96.7	2,281.8	319.9	2,601.7
Degree or equivalent	441.9	56.6	498.5	16.7	*	19.6	458.6	59.6	518.1
Trade, technical level	1,715.9	238.9	1,954.8	62.8	10.0	72.8	1,778.7	248.9	2,027.6
Other	41.4	10.3	51.7	*	*	*	44.6	11.4	56.0
Without post-school qualifications	3,140.0	612.1	3,752.0	272.5	34.0	306.4	3,412.4	646.0	4,058.4
Attended highest level of secondary school available	630.4	116.2	746.6	47.0	6.2	53.2	677.4	122.4	799.8
Did not attend highest level of secondary school available and left at age—									
18 years or over	35.7	5.1	40.8	*	*	4.5	40.0	5.3	45.3
16 or 17 years	782.9	131.1	914.1	84.0	9.1	93.1	867.0	140.2	1,007.1
14 or 15 years	1,422.1	317.8	1,739.8	121.0	16.3	137.3	1,543.1	334.1	1,877.2
13 years or under	256.5	40.8	297.3	14.8	*	17.0	271.3	43.0	314.3
Total	2,497.2	494.8	2,992.0	224.2	27.7	251.9	2,721.4	522.6	3,243.9
Never attended school	12.3	*	13.4	*	*	*	13.7	*	14.7
Still at school	*	67.4	70.6	7.6	11.7	19.3	10.8	79.1	89.9
Total	5,342.3	985.3	6,327.6	362.6	59.8	422.4	5,705.0	1,045.0	6,750.0

TABLE 3. PERSONS IN THE LABOUR FORCE : EDUCATIONAL ATTAINMENT AND EMPLOYMENT STATUS, FEBRUARY 1981
(' 000)

	With post-school qualifications				Without post-school qualifications							Still at School	Total
	Degree or equivalent	Trade, technical level	Other	Total	Attended highest secondary level	Did not attend highest level of secondary school and left at age (years)				Total(b)			
						16-17	14-15	Under 14	Total(a)				
MALES													
N.S.W.	133.0	477.4	7.8	618.2	172.7	205.5	405.8	68.5	685.3	861.4	12.6	1,492.2	
Vic.	97.8	343.4	8.0	449.1	130.6	180.0	277.5	71.5	544.4	677.3	12.0	1,138.5	
Qld	44.5	221.0	4.1	269.7	63.7	70.5	200.4	39.5	313.7	378.3	6.8	654.8	
S.A.	28.9	125.0	4.9	158.8	43.3	60.4	94.2	19.7	177.1	221.1	4.4	384.3	
W.A.	31.8	126.0	2.3	160.2	45.0	34.4	128.3	13.9	177.3	223.3	3.7	387.2	
Tas.	9.8	33.1	*	43.2	25.9	12.9	34.9	4.3	52.3	78.3	*	122.7	
N.T.	2.6	13.3	*	16.1	6.3	5.1	8.1	*	14.9	21.2	*	37.3	
A.C.T.	13.7	18.8	*	33.2	15.7	7.3	6.7	*	14.9	30.8	*	65.6	
Australia	362.3	1,358.1	28.1	1,748.5	503.2	576.2	1,156.0	219.5	1,979.9	2,491.7	42.3	4,282.5	
FEMALES													
N.S.W.	59.7	259.2	6.8	325.7	88.6	138.8	254.0	25.3	420.6	511.8	15.5	852.9	
Vic.	42.8	175.5	5.8	224.0	80.8	142.5	174.0	36.5	361.9	444.7	14.7	683.5	
Qld	17.6	88.2	6.8	112.6	37.9	60.3	128.3	13.5	204.4	242.3	6.3	361.1	
S.A.	12.1	49.9	4.8	66.7	31.7	46.1	64.7	10.7	122.9	155.1	3.8	225.6	
W.A.	12.4	62.4	*	77.0	28.5	27.6	68.8	5.6	102.2	131.3	3.7	212.0	
Tas.	3.3	16.6	*	21.1	19.7	5.5	17.9	1.6	25.0	44.8	*	66.8	
N.T.	*	5.3	*	7.1	*	5.6	4.8	*	12.1	14.0	*	21.6	
A.C.T.	6.4	12.5	*	19.1	7.7	4.6	8.7	*	14.9	22.8	*	44.0	
Australia	155.8	669.5	27.9	853.2	296.6	430.9	721.2	94.8	1,264.0	1,566.7	47.5	2,467.5	
PERSONS													
Employed—													
N.S.W.	185.0	711.9	13.4	910.3	248.5	310.7	613.5	88.1	1,019.1	1,272.6	23.9	2,206.9	
Vic.	135.5	500.7	13.1	649.3	197.4	296.1	418.1	102.2	838.5	1,040.2	19.2	1,708.8	
Qld	60.5	297.5	9.9	367.9	94.3	120.8	305.7	49.7	481.5	576.4	10.3	954.6	
S.A.	39.0	167.1	8.8	214.8	67.4	93.4	147.0	29.4	273.4	342.1	6.4	563.3	
W.A.	42.7	181.2	4.1	228.1	67.1	56.8	181.7	19.0	258.2	326.9	6.0	561.1	
Tas.	12.6	48.2	*	62.0	41.6	16.4	47.3	5.8	69.7	111.6	1.9	175.5	
N.T.	4.2	18.2	*	22.7	8.1	9.9	12.5	*	25.7	33.8	*	57.1	
A.C.T.	18.9	30.1	*	49.8	22.1	10.0	14.0	*	26.1	48.4	2.3	100.5	
Australia	498.5	1,954.8	51.7	2,505.0	746.6	914.1	1,739.8	297.3	2,992.0	3,752.0	70.6	6,327.6	
Unemployed—													
N.S.W.	7.7	24.7	*	33.6	12.8	33.6	46.3	5.7	86.8	100.6	*	138.3	
Vic.	5.1	18.2	*	23.8	14.0	26.4	33.4	5.8	67.8	81.8	7.5	113.1	
Qld	*	11.7	*	14.3	7.3	10.0	23.0	*	36.6	44.2	*	61.2	
S.A.	*	7.9	*	10.7	7.5	13.2	11.9	*	26.6	34.1	*	46.7	
W.A.	*	7.2	*	9.0	6.3	5.3	15.4	*	21.4	27.7	*	38.1	
Tas.	*	1.6	*	2.3	3.9	2.0	5.5	*	7.6	11.5	*	14.0	
Australia(c)	19.6	72.8	*	96.7	53.2	93.1	137.3	17.0	251.9	306.4	19.3	422.4	
Total labour force—²													
N.S.W.	192.8	736.6	14.5	943.9	261.3	344.3	659.8	93.8	1,105.9	1,373.2	28.1	2,345.2	
Vic.	140.6	518.8	13.7	673.1	211.4	322.5	451.4	108.0	906.3	1,122.0	26.7	1,821.9	
Qld	62.1	309.2	10.9	382.2	101.6	130.8	328.7	53.0	518.1	620.6	13.0	1,015.9	
S.A.	41.0	174.9	9.6	225.5	75.0	106.5	158.9	30.4	300.0	376.2	8.2	609.9	
W.A.	44.3	188.4	4.4	237.1	73.4	62.1	197.1	19.5	279.5	354.6	7.4	599.2	
Tas.	13.1	49.8	*	64.3	45.5	18.4	52.8	5.9	77.2	123.1	2.0	189.4	
N.T.	4.2	18.6	*	23.2	8.1	10.7	12.9	*	27.0	35.2	*	58.9	
A.C.T.	20.1	31.3	*	52.3	23.5	11.9	15.5	*	29.9	53.6	3.7	109.7	
Australia	518.1	2,027.6	56.0	2,601.7	799.8	1,007.1	1,877.2	314.3	3,243.9	4,058.4	89.9	6,750.0	

(a) Includes persons who left school at 18 years or over. (b) Includes persons who never attended school. (c) Includes the Northern Territory and the Australian Capital Territory.

TABLE 4. PERSONS IN THE LABOUR FORCE : EDUCATIONAL ATTAINMENT,
BIRTHPLACE AND PERIOD OF ARRIVAL IN AUSTRALIA, FEBRUARY 1981
(' 000)

Birthplace and period of arrival	With post-school qualifications			Without post-school qualifications			Total (b)	Total (c)
	Degree or equivalent	Trade, technical level	Total (a)	Attended highest secondary level	Did not attend highest level of secondary school and left at age (years)			
					16 or over	15 or under		
MALES								
Born in Australia	249.6	988.3	1,259.3	376.4	487.0	1,003.0	1,868.5	3,164.4
Born in main English-speaking countries(d)	62.3	190.8	257.2	48.0	52.5	139.4	240.4	500.6
Arrived before 1961	19.3	55.8	76.5	9.9	10.6	49.3	70.0	146.5
1961-1970	19.8	77.8	99.5	23.4	24.3	66.4	114.3	216.2
1971-1979	19.8	49.9	70.4	12.6	14.5	20.2	47.3	118.2
1980-Feb. 1981	.	7.3	10.9	.	.	.	8.8	19.7
Born in other countries	50.3	178.9	232.0	78.8	65.0	233.0	382.8	617.6
Arrived before 1961	19.8	94.0	114.5	28.3	27.4	120.1	177.0	291.6
1961-1970	12.4	46.4	60.1	23.9	22.6	81.5	131.8	193.1
1971-1979	15.7	35.3	51.6	22.1	13.4	29.8	66.2	119.3
1980-Feb. 1981	5.8	.	5.8	4.6	.	.	7.8	13.7
Total born overseas	112.7	369.8	489.2	126.8	117.4	372.4	623.2	1,118.1
Arrived before 1961	39.0	149.8	191.0	38.2	38.0	169.3	247.0	438.0
1961-1970	32.2	124.1	159.6	47.2	46.9	147.9	246.1	409.3
1971-1979	35.5	85.3	122.0	34.7	27.9	50.0	113.5	237.5
1980-Feb. 1981	5.9	10.6	16.7	6.7	4.7	5.2	16.6	33.3
Total	362.3	1,358.1	1,748.5	503.2	604.5	1,375.5	2,491.7	4,282.5
FEMALES								
Born in Australia	111.8	515.3	647.5	218.3	363.2	598.4	1,181.8	1,871.4
Born in main English-speaking countries(d)	23.8	85.4	114.0	38.4	45.4	88.4	172.2	289.6
Arrived before 1961	5.7	21.5	28.1	7.8	9.2	26.4	43.3	71.5
1961-1970	7.8	35.2	45.6	16.2	21.3	43.8	81.3	129.0
1971-1979	9.0	23.6	33.4	10.9	11.9	16.9	39.7	74.4
1980-Feb. 1981	.	5.1	6.9	.	.	.	7.8	14.8
Born in other countries	20.2	68.9	91.8	40.0	39.3	129.2	212.8	306.5
Arrived before 1961	7.1	24.8	33.4	12.8	16.7	50.3	80.4	113.8
1961-1970	.	19.5	23.6	11.8	13.8	54.6	81.9	106.9
1971-1979	7.6	22.9	31.6	13.0	8.7	23.5	47.0	79.1
1980-Feb. 1981	6.7
Total born overseas	43.9	154.2	205.7	78.3	84.8	217.6	385.0	596.1
Arrived before 1961	12.8	46.3	61.5	20.5	25.9	76.7	123.7	185.2
1961-1970	11.7	54.7	69.2	28.0	35.1	98.4	163.2	235.9
1971-1979	16.6	46.5	64.9	23.9	20.6	40.4	86.8	153.5
1980-Feb. 1981	.	6.7	10.1	5.9	.	.	11.2	21.5
Total	155.8	669.5	853.2	296.6	448.0	816.0	1,566.7	2,467.5
PERSONS								
Born in Australia	361.5	1,503.6	1,906.8	594.7	850.3	1,601.5	3,050.3	5,035.8
Born in main English-speaking countries(d)	86.1	276.2	371.2	86.4	97.9	227.8	412.6	790.2
Arrived before 1961	25.0	77.3	104.6	17.7	19.8	75.6	113.3	217.9
1961-1970	27.6	112.9	145.1	39.6	45.5	110.2	195.6	345.2
1971-1979	28.8	73.6	103.7	23.6	26.4	37.1	87.0	192.6
1980-Feb. 1981	4.8	12.4	17.8	5.6	6.1	4.9	16.6	34.5
Born in other countries	70.5	247.8	323.7	118.7	104.3	362.2	595.6	924.1
Arrived before 1961	26.8	118.8	147.9	41.1	44.1	170.4	257.5	405.3
1961-1970	16.4	65.9	83.7	35.7	36.4	136.1	213.7	300.0
1971-1979	23.3	58.2	83.2	35.1	22.1	53.3	113.3	198.4
1980-Feb. 1981	.	4.9	9.0	7.0	.	.	11.2	20.4
Total born overseas	156.6	524.0	695.0	205.1	202.2	590.0	1,008.2	1,714.3
Arrived before 1961	51.8	196.1	252.5	58.7	63.9	246.0	370.8	623.3
1961-1970	43.9	178.8	228.8	75.2	82.0	246.3	409.3	645.2
1971-1979	52.1	131.8	186.9	58.6	48.5	90.4	200.3	391.0
1980-Feb. 1981	8.8	17.3	26.8	12.5	7.9	7.4	27.8	54.9
Total	518.1	2,027.6	2,601.7	799.8	1,052.5	2,191.5	4,058.4	6,750.0

(a) Includes persons with other post-school qualifications. (b) Includes persons who never attended school. (c) Includes persons aged 15 years and over who were in the labour force but still attending school. (d) Comprises U.K., Ireland, Canada, New Zealand, U.S.A. and South Africa.

TABLE 5. PERSONS IN THE LABOUR FORCE : EDUCATIONAL ATTAINMENT AND INDUSTRY (a), FEBRUARY 1981
 (' 000)

Industry division	With post-school qualifications			Without post-school qualifications				Total (d)
	Degree or equivalent	Trade, technical level	Total (b)	Attended highest secondary level	Did not attend highest level of secondary school and left at age (years)		Total (c)	
					16 or over	15 or under		
MALES								
Agriculture, forestry, fishing and hunting	8.9	58.6	69.4	35.6	52.8	166.4	255.8	328.1
Mining	6.7	28.1	35.1	8.2	8.7	29.3	46.3	81.3
Manufacturing	37.7	340.2	382.8	96.3	146.1	351.1	598.0	982.3
Electricity, gas and water	9.0	48.6	58.1	12.8	14.7	37.4	65.0	123.1
Construction	10.9	219.6	232.2	26.0	55.2	147.8	229.9	462.6
Wholesale and retail trade	25.9	232.6	264.5	105.3	131.2	231.4	468.2	756.9
Transport and storage	6.7	79.0	88.1	28.7	48.3	141.6	218.7	306.8
Communication	5.9	32.0	38.7	13.0	11.3	32.1	56.3	95.0
Finance, property and business services	62.1	86.4	151.4	65.5	43.0	47.2	155.6	307.9
Public administration and defence	38.8	55.6	96.2	33.1	20.5	50.3	104.6	200.7
Community services	138.6	123.1	263.8	34.5	29.8	61.7	126.6	390.7
Recreation, personal and other services	8.1	49.5	60.5	30.0	26.9	55.0	112.2	175.3
Had not worked for two weeks or more in a full-time job in the last two years	•	•	6.4	•	•	17.2	25.2	31.8
Looking for first full-time job	•	•	•	10.5	11.7	7.2	29.4	40.0
Total	362.3	1,358.1	1,748.5	503.2	604.5	1,375.5	2,491.7	4,282.5
FEMALES								
Agriculture, forestry, fishing and hunting	•	26.2	30.2	10.9	19.8	47.6	78.4	110.6
Mining	•	•	•	•	•	•	5.4	6.9
Manufacturing	7.5	50.4	60.5	27.9	65.5	164.4	260.6	321.5
Electricity, gas and water	•	•	5.2	•	•	•	7.0	12.1
Construction	•	13.9	16.1	4.5	8.4	20.4	33.3	49.4
Wholesale and retail trade	12.5	100.1	119.0	70.2	131.7	223.6	426.2	574.9
Transport and storage	•	19.9	22.0	8.1	10.2	17.7	36.0	58.3
Communication	•	7.0	8.4	4.9	5.9	13.1	24.0	32.4
Finance, property and business services	6.8	67.8	77.0	49.4	60.8	66.3	176.4	254.1
Public administration and defence	8.8	24.7	36.1	20.2	17.3	20.1	57.7	93.7
Community services	101.6	284.0	391.2	55.9	52.7	116.9	226.5	618.9
Recreation, personal and other services	4.8	54.6	62.5	28.6	47.0	89.1	165.4	232.7
Had not worked for two weeks or more in a full-time job in the last two years	•	10.6	15.6	•	9.2	22.9	37.4	53.3
Looking for first full-time job	•	4.6	8.0	8.3	14.9	9.2	32.4	48.6
Total	155.8	669.5	853.2	296.6	448.0	816.0	1,566.7	2,467.5
PERSONS								
Agriculture, forestry, fishing and hunting	11.4	84.8	99.6	46.5	72.6	214.0	334.2	438.6
Mining	6.7	29.5	36.5	10.4	10.3	30.9	51.7	88.2
Manufacturing	45.2	390.6	443.4	124.3	211.6	515.5	858.6	1,303.9
Electricity, gas and water	9.5	52.8	63.3	13.9	17.7	40.2	71.9	135.2
Construction	12.0	233.6	248.3	30.5	63.5	168.2	263.2	512.0
Wholesale and retail trade	38.4	332.7	383.6	175.5	263.0	455.1	894.5	1,331.8
Transport and storage	8.7	98.9	110.0	36.9	58.5	159.2	254.8	365.1
Communication	6.9	39.0	47.1	17.8	17.2	45.2	80.3	127.3
Finance, property and business services	68.8	154.2	228.5	114.9	103.8	113.4	332.1	562.0
Public administration and defence	47.6	80.3	132.3	53.4	37.8	70.5	162.2	294.5
Community services	240.1	407.1	655.0	90.4	82.5	178.7	353.0	1,009.6
Recreation, personal and other services	13.0	104.2	123.0	58.7	73.9	144.1	277.6	407.9
Had not worked for two weeks or more in a full-time job in the last two years	6.0	15.0	22.0	8.0	13.4	40.0	62.6	85.0
Looking for first full-time job	•	4.9	9.2	18.8	26.6	16.4	61.8	88.7
Total	518.1	2,027.6	2,601.7	799.8	1,052.5	2,191.5	4,058.4	6,750.0

(a) For persons unemployed at the time of the survey, relates to the last full-time job lasting two weeks or more in the last two years. (b) Includes persons with other post-school qualifications. (c) Includes persons who never attended school. (d) Includes persons aged 15 years and over who were in the labour force but still attending school.

TABLE 6. PERSONS IN THE LABOUR FORCE: EDUCATIONAL ATTAINMENT AND OCCUPATION (a), FEBRUARY 1981 ('000)

Occupation group	With post-school qualifications			Attended highest secondary level	Without post-school qualifications			Total (d)
	Degree or equivalent	Trade, technical level	Total (b)		Did not attend highest level of secondary school and left at age (years)		Total (c)	
					16 or over	15 or under		
MALES								
Professional, technical, etc.	253.7	167.9	422.7	42.5	15.4	20.6	78.5	501.2
Administrative, executive and managerial	34.6	129.5	167.5	51.2	44.6	91.7	187.2	355.1
Clerical	27.6	54.7	87.4	110.0	62.5	61.9	234.5	322.8
Sales	8.6	73.3	85.6	52.7	48.4	77.0	178.1	276.1
Farmers, fishermen, timber-getters, etc.	8.7	65.9	78.0	39.4	59.8	187.9	288.1	369.3
Miners, quarrymen, etc.	*	13.7	14.4	*	*	20.0	28.1	42.5
Transport and communication	4.5	64.9	71.4	26.1	46.7	169.9	243.0	315.3
Tradesmen, production-process workers and labourers, n.e.c.	14.7	720.3	741.2	129.3	273.4	630.1	1,039.3	1,791.3
Service, sport and recreation	6.5	63.2	72.5	33.4	34.1	92.0	160.2	237.2
Had not worked for two weeks or more in a full-time job in the last two years(e)	*	4.7	7.7	14.1	15.9	24.3	54.5	71.8
Total	362.3	1,358.1	1,748.5	503.2	604.5	1,375.5	2,491.7	4,282.5
FEMALES								
Professional, technical, etc.	107.3	222.6	332.7	33.5	15.6	19.8	68.9	401.9
Administrative, executive and managerial	*	11.1	15.4	5.4	12.0	21.5	38.9	54.4
Clerical	21.3	229.7	260.9	132.4	192.8	208.6	534.0	804.9
Sales	5.3	52.0	60.2	39.3	68.3	127.1	234.8	314.2
Farmers, etc.	*	25.0	29.2	9.8	16.0	49.4	75.4	106.4
Transport and communication	*	9.1	11.2	5.3	8.8	19.5	33.6	45.1
Tradeswomen, production-process workers and labourers, n.e.c.	*	25.9	30.9	17.8	47.9	151.2	220.0	251.5
Service, sport and recreation	5.4	78.8	89.0	40.5	62.2	186.7	290.6	386.3
Had not worked for two weeks or more in a full-time job in the last two years(e)	6.9	15.2	23.5	12.6	24.1	32.1	69.8	101.9
Total(f)	155.8	669.5	853.2	296.6	448.0	816.0	1,566.7	2,467.5
PERSONS								
Professional, technical, etc.	360.9	390.6	755.5	76.0	31.0	40.4	147.4	903.2
Administrative, executive and managerial	37.5	140.6	183.0	56.6	56.6	113.3	226.5	409.4
Clerical	48.9	284.5	348.3	242.4	255.4	270.5	768.5	1,127.7
Sales	13.8	125.3	145.8	91.9	116.7	204.0	412.9	590.2
Farmers, fishermen, timber-getters, etc.	11.1	91.0	107.1	49.2	75.8	237.2	363.5	475.7
Miners, quarrymen, etc.	*	13.8	14.6	4.6	*	20.3	28.7	43.2
Transport and communication	5.9	74.0	82.6	31.4	55.5	189.5	276.6	360.4
Tradesmen, production-process workers and labourers, n.e.c.	17.6	746.1	772.2	147.1	321.2	781.3	1,259.3	2,042.9
Service, sport and recreation	11.9	142.0	161.5	73.9	96.3	278.7	450.7	623.5
Had not worked for two weeks or more in a full-time job in the last two years(e)	9.8	19.9	31.2	26.8	40.1	56.4	124.4	173.7
Total	518.1	2,027.6	2,601.7	799.8	1,052.5	2,191.5	4,058.4	6,750.0

(a) For persons unemployed at the time of the survey, relates to the last full-time job lasting two weeks or more in the last two years. (b) Includes persons with other post-school qualifications. (c) Includes persons who never attended school. (d) Includes persons aged 15 years and over who were in the labour force but still attending school. (e) Includes persons who were looking for their first full-time job. (f) Includes miners, etc.

TABLE 7. PERSONS IN THE LABOUR FORCE(a) : EDUCATIONAL ATTAINMENT, INDUSTRY(b) AND OCCUPATION(b), FEBRUARY 1981
(' 000)

Occupation group	Industry division											Total
	Agriculture, forestry, fishing and hunting	Mining	Manufacturing	Construction	Wholesale and retail trade	Transport and storage	Finance property and business services	Community services	Public administration and defence	Recreation, personal and other services	Other industries	
WITH POST-SCHOOL QUALIFICATIONS												
Professional, technical, etc.	•	7.1	57.6	13.1	21.2	6.3	74.2	491.6	43.4	10.9	28.6	755.5
Administrative, executive and managerial	•	•	37.1	10.8	62.4	•	26.2	8.2	14.6	13.9	•	183.0
Clerical	•	•	38.5	16.7	52.1	21.1	80.4	57.9	46.3	15.8	13.9	348.3
Sales	•	•	13.2	•	96.2	•	27.4	•	•	•	•	145.8
Farmers, fishermen, timber-getters, etc.	86.8	•	•	•	4.5	•	•	•	•	5.4	•	107.1
Miners, quarrymen and related workers	•	13.5	•	•	•	•	•	•	•	•	•	14.6
Transport and communication	•	•	6.9	•	10.3	47.5	•	•	•	•	7.8	82.6
Tradesmen, production-process workers and labourers, n.e.c.	•	11.7	285.1	201.8	132.4	24.6	10.6	21.6	17.5	7.7	56.3	772.2
Service, sport and recreation	•	•	•	•	4.5	5.4	8.0	68.2	4.6	65.4	•	161.5
Total	99.6	36.5	443.4	248.3	383.6	110.0	228.5	655.0	132.3	123.0	110.4	(c)2,601.7
WITHOUT POST-SCHOOL QUALIFICATIONS BUT ATTENDED HIGHEST LEVEL OF SECONDARY SCHOOL AVAILABLE												
Professional, technical, etc.	•	•	13.4	•	•	•	10.0	35.4	•	5.0	•	76.0
Administrative, executive and managerial	•	•	8.2	•	25.6	•	6.8	•	•	6.9	•	56.6
Clerical	•	•	22.0	5.8	35.6	12.1	82.0	21.9	41.9	5.8	11.7	242.4
Sales	•	•	4.5	•	73.5	•	9.4	•	•	•	•	91.9
Farmers, fishermen, timber-getters, etc.	42.8	•	•	•	•	•	•	•	•	•	•	49.2
Transport and communication	•	•	•	•	•	14.0	•	•	•	•	•	31.4
Tradesmen, production-process workers and labourers, n.e.c.	•	•	70.2	21.1	28.5	4.8	•	•	•	•	10.0	147.1
Service, sport and recreation	•	•	•	•	•	•	•	25.9	•	34.2	•	73.9
Total(d)	46.5	10.4	124.3	30.5	175.5	36.9	114.9	90.4	53.4	58.7	31.7	(c)799.8
WITHOUT POST-SCHOOL QUALIFICATIONS AND DID NOT ATTEND HIGHEST LEVEL OF SECONDARY SCHOOL AVAILABLE												
Professional, technical, etc.	•	•	12.2	•	5.7	•	9.3	30.1	•	4.9	•	71.4
Administrative, executive and managerial	•	•	21.7	6.9	85.0	8.9	17.7	•	•	20.0	•	169.9
Clerical	•	•	73.7	24.8	117.9	35.6	123.5	49.5	45.3	28.9	20.5	526.1
Sales	•	•	17.9	•	270.8	•	16.1	•	•	10.0	•	321.0
Farmers, fishermen, timber-getters, etc.	271.0	•	•	4.6	7.1	•	•	9.2	5.0	9.9	•	314.2
Miners, quarrymen and related workers	•	21.4	•	•	•	•	•	•	•	•	•	24.1
Transport and communication	•	•	26.4	10.9	29.3	115.9	•	8.6	10.2	•	34.5	245.2
Tradesmen, production-process workers and labourers, n.e.c.	5.3	10.4	556.5	180.8	181.1	45.8	12.3	26.9	30.3	10.7	52.0	1,112.2
Service, sport and recreation	•	•	20.7	•	21.9	8.0	35.7	132.4	12.5	132.9	8.1	376.9
Total	287.7	41.3	734.3	232.7	719.0	217.9	217.2	262.6	108.9	219.0	120.5	(c)3,258.6

(a) Excludes persons aged 15 years and over who were in the labour force but still attending school. (b) For persons unemployed at the time of the survey, relates to last full-time job lasting two weeks or more in the last two years. (c) Includes unemployed persons who had not worked for two weeks or more in a full-time job in the last two years or who had never worked. (d) Includes miners, etc.

TABLE 8. PERSONS IN THE LABOUR FORCE WHOSE HIGHEST EDUCATIONAL ATTAINMENT WAS A DEGREE OR EQUIVALENT LEVEL QUALIFICATION: MAIN FIELD OF STUDY AND AGE, FEBRUARY 1981 ('000)

Main field of study	Age group (years)				Total
	15-24	25-44	45-54	55 and over	
MALES					
Administration, business studies, commerce, economics, etc.(a)	5.4	42.2	9.6	7.4	64.6
Law	•	15.7	•	•	20.7
Education, teacher training	6.1	27.4	6.9	•	43.5
Medicine, dentistry, pharmacy, nursing	•	21.4	8.6	5.7	38.8
Science, mathematics, computing, etc.(b)	9.6	46.2	8.9	•	68.8
Engineering, telecommunication, transport, surveying	5.2	43.5	11.1	8.2	67.9
Arts, humanities, social studies, etc.(c)	5.2	27.3	6.9	•	42.5
Architecture, town planning	•	5.6	•	•	9.1
Other	•	4.5	•	•	6.4
Total	37.4	233.8	57.8	33.4	362.3
FEMALES					
Administration, business studies, commerce, economics, etc.(a)	•	7.7	•	•	13.8
Law	•	•	•	•	•
Education, teacher training	9.8	30.7	5.6	•	49.5
Medicine, dentistry, pharmacy, nursing	•	14.8	•	•	24.7
Science, mathematics, computing, etc.(b)	7.2	10.0	•	•	17.7
Engineering, telecommunication, transport, surveying	•	•	•	•	•
Arts, humanities, social studies, etc.(c)	10.9	27.2	5.6	•	45.1
Architecture, town planning	•	•	•	•	•
Other	•	•	•	•	•
Total	36.6	93.3	18.3	7.6	155.8
PERSONS					
Administration, business studies, commerce, economics, etc.(a)	9.0	49.9	11.4	8.1	78.4
Law	•	17.1	•	•	22.9
Education, teacher training	15.9	58.1	12.5	6.5	93.0
Medicine, dentistry, pharmacy, nursing	7.2	36.2	12.7	7.5	63.5
Science, mathematics, computing, etc.(b)	16.9	56.2	9.1	•	86.5
Engineering, telecommunication, transport, surveying	5.2	43.9	11.3	8.2	68.6
Arts, humanities, social studies, etc.(c)	16.1	54.4	12.5	•	87.5
Architecture, town planning	•	6.3	•	•	10.1
Other	•	5.0	•	•	7.5
Total	74.0	327.1	76.1	40.9	518.1

(a) Includes accounting and secretarial studies. (b) Includes veterinary and agricultural science, statistics, computer programming, chemistry and physics. (c) Includes languages, history, politics, philosophy, psychology, social welfare, religion, geography, art and music.

TABLE 9. PERSONS IN THE LABOUR FORCE WHOSE HIGHEST EDUCATIONAL ATTAINMENT WAS A TRADE OR TECHNICAL LEVEL QUALIFICATION : MAIN FIELD OF STUDY, EMPLOYMENT STATUS AND AGE, FEBRUARY 1981 (' 000)

Main field of study	Total labour force							Total
	Employed	Unemployed	Age group (years)					
			15-24	25-44	45-55	55 and over		
MALES								
All trades—								
Metal	214.8	5.1	34.4	118.6	40.3	26.5		219.8
Electrical	114.1	*	19.8	68.7	19.3	10.4		118.3
Building	213.1	6.6	38.4	118.2	41.4	21.7		219.7
Automotive	141.8	6.4	29.4	84.6	24.7	9.5		148.2
Other	186.6	5.1	31.8	113.2	29.1	17.7		191.7
Total	870.4	27.3	153.8	503.4	154.7	85.9		897.8
Typing, secretarial studies, data processing	6.3	*	*	4.8	*	*		6.4
Health, para-medical, etc.(a)	25.0	*	*	13.6	6.8	*		25.8
Engineering, telecommunication, etc.(b)	127.1	*	11.8	79.3	23.5	14.7		129.4
Teacher training	42.7	*	*	29.2	7.1	*		43.1
Administration, law, commerce, etc.(c)	112.9	*	*	69.0	23.5	18.0		114.8
Science, computing, humanities, etc.(d)	60.2	*	9.8	38.7	7.8	4.7		61.0
Other	77.5	*	8.0	46.2	14.1	11.5		79.8
Total	1,322.0	36.1	195.6	784.1	237.9	140.5		1,358.1
FEMALES								
All trades	33.6	*	9.3	20.5	*	*		35.8
Typing, secretarial studies, data processing	226.9	16.5	99.8	108.2	25.6	9.9		243.5
Health, para-medical, etc.(a)	179.8	5.3	38.5	110.2	25.9	10.5		185.1
Engineering, telecommunication, etc.(b)	5.9	*	*	4.9	*	*		6.2
Teacher training	95.6	6.0	20.7	64.8	11.4	4.7		101.5
Administration, law, commerce, etc.(c)	26.1	*	5.2	15.7	4.6	*		28.6
Science, computing, humanities, etc.(d)	28.5	*	7.0	16.2	5.6	*		30.5
Other	36.3	*	15.3	17.6	*	*		38.3
Total	632.8	36.7	196.6	358.0	80.9	34.0		669.5
PERSONS								
All trades—								
Metal	215.5	5.1	34.6	119.1	40.3	26.6		220.6
Electrical	114.3	*	19.8	69.0	19.3	10.4		118.5
Building	213.9	6.8	38.6	119.0	41.4	21.7		220.7
Automotive	142.6	6.4	29.8	85.1	24.7	9.5		149.0
Other	217.7	7.1	40.4	131.8	33.2	19.5		224.8
Total	904.0	29.5	163.1	523.8	158.8	87.8		933.6
Typing, secretarial studies, data processing	233.2	16.7	100.8	113.0	25.9	10.2		249.9
Health, para-medical, etc.(a)	204.8	6.1	41.6	123.7	32.7	12.9		210.9
Engineering, telecommunication, etc.(b)	133.0	*	12.6	84.2	24.1	14.7		135.6
Teacher training	138.3	6.3	24.4	94.0	18.5	7.7		144.6
Administration, law, commerce, etc.(c)	139.0	*	9.5	84.6	28.1	21.1		143.4
Science, computing, humanities, etc.(d)	88.8	*	16.8	54.9	13.4	6.4		91.5
Other	113.8	*	23.3	63.8	17.2	13.8		118.2
Total	1,954.8	72.8	392.2	1,142.1	318.8	174.5		2,027.6

(a) Includes nursing and health therapy. (b) Includes architecture, surveying, drafting and town planning. (c) Includes business administration, economics and bookkeeping. (d) Includes social studies, social welfare, veterinary and agricultural science, chemistry, languages, arts, crafts and music.

TABLE 10. EMPLOYED PERSONS : EDUCATIONAL ATTAINMENT AND AGE, FEBRUARY 1981

Educational attainment	Age group (years)						Total	per cent
	15-19	20-24	25-34	35-44	45-54	55 and over		
	— '000—							
MALES								
With post-school qualifications	19.2	204.7	568.0	446.9	294.1	170.1	1,703.1	42.0
Degree or equivalent	*	32.7	132.5	97.3	57.5	32.9	353.4	8.7
Trade, technical level	17.4	167.5	425.3	344.3	232.0	135.6	1,322.0	32.6
Other	*	4.6	10.2	5.3	4.6	*	27.7	0.7
Without post-school qualifications(a)	330.5	334.3	525.2	414.9	390.1	326.6	2,321.5	57.2
Attended highest level of secondary school available	79.0	136.2	130.7	57.0	41.8	29.6	474.4	11.7
Did not attend highest level of secondary school available and left at age—								
18 years or over		6.4	10.9		5.3	*	24.9	0.6
16 or 17 years	135.9	105.3	143.0	65.8	47.0	33.2	530.2	13.1
14 or 15 years	110.6	87.8	217.0	237.9	227.6	195.3	1,076.2	26.5
13 years or under	*	*	23.2	48.9	67.3	64.6	207.5	5.1
Total	251.5	198.1	394.1	355.6	344.2	295.4	1,838.9	45.3
Still at school	31.9	*	*	*	*	*	32.4	0.8
Total	381.6	539.7	1,093.1	861.8	684.2	496.7	4,057.1	100.0
FEMALES								
With post-school qualifications	46.3	170.8	262.6	178.7	101.3	42.2	801.9	35.3
Degree or equivalent	*	31.7	55.4	32.5	17.6	7.6	145.1	6.4
Trade, technical level	43.6	134.4	200.6	142.5	78.1	33.6	632.8	27.9
Other	*	4.7	6.6	*	5.6	*	24.0	1.1
Without post-school qualifications(a)	239.4	224.0	317.4	297.1	233.4	119.1	1,430.5	63.0
Attended highest level of secondary school available	74.2	76.9	57.3	26.8	22.4	14.5	272.2	12.0
Did not attend highest level of secondary school available and left at age—								
18 years or over	*	5.6		6.0	*	*	15.8	0.7
16 or 17 years	86.9	82.4	104.8	55.6	34.5	19.7	383.8	16.9
14 or 15 years	74.3	57.7	139.0	176.7	144.7	71.3	663.6	29.2
13 years or under	*	*	11.6	33.8	29.4	12.4	89.9	4.0
Total	165.2	147.0	258.9	268.6	209.3	104.2	1,153.2	50.8
Still at school	38.0	*	*	*	*	*	38.2	1.7
Total	323.7	394.9	580.0	475.8	334.8	161.3	2,270.5	100.0
PERSONS								
With post-school qualifications	65.5	375.5	830.6	625.7	395.4	212.3	2,505.0	39.6
Degree or equivalent	*	64.4	188.0	129.8	75.1	40.4	498.5	7.9
Trade, technical level	61.0	301.9	625.9	486.9	310.1	169.1	1,954.8	30.9
Other	*	9.3	16.8	9.0	10.2	*	51.7	0.8
Without post-school qualifications	569.9	558.3	842.6	711.9	623.5	445.8	3,752.0	59.3
Attended highest level of secondary school available	153.3	213.2	188.0	83.8	64.2	44.2	746.6	11.8
Did not attend highest level of secondary school available and left at age—								
18 years or over	6.3	8.4	14.4	5.5	*	*	40.8	0.6
16 or 17 years	222.8	187.7	247.9	121.4	81.5	52.9	914.1	14.4
14 or 15 years	184.9	145.5	356.0	414.5	372.3	266.6	1,739.8	27.5
13 years or under	*	*	34.8	82.7	96.8	77.0	297.3	4.7
Total	416.7	345.1	653.1	624.1	553.4	2,399.7	2,992.0	47.3
Never went to school	*	*		5.6	5.9	*	13.4	0.2
Still at school	69.9	*	*	*	*	*	70.6	1.1
Total	705.3	934.6	1,673.2	1,337.6	1,018.9	658.0	6,327.6	100.0

(a) Includes persons who never attended school.

TABLE 11. UNEMPLOYED PERSONS: EDUCATIONAL ATTAINMENT AND DURATION OF CURRENT PERIOD OF UNEMPLOYMENT, FEBRUARY 1981

Educational attainment	Duration of current period of unemployment (weeks)						Total	Average (mean) duration	Median duration
	1 and under 4	4 and under 8	8 and under 13	13 and under 26	26 and under 52	52 and over			
	—'000—							—weeks—	
MALES									
With post-school qualifications(a)	10.5	10.1	8.3	7.8	*	6.1	45.4	23.9	9.3
Degree or equivalent	*	4.7	*	*	*	*	8.9	19.4	9.1
Trade, technical level	8.5	7.7	5.8	6.5	*	5.1	36.1	25.2	9.5
Without post-school qualifications(b)	24.2	23.7	29.5	25.7	24.3	42.8	170.2	38.6	16.9
Attended highest level of secondary school available	*	4.9	8.2	5.0	*	5.0	28.7	26.2	11.5
Did not attend highest level of secondary school available	20.5	18.8	21.1	20.7	22.4	37.6	141.0	41.1	19.4
Total(c)	37.2	35.5	41.5	34.2	27.8	49.3	225.5	34.5	12.8
FEMALES									
With post-school qualifications(a)	13.7	8.6	9.3	9.0	5.8	4.9	51.3	20.8	9.8
Degree or equivalent	*	6.5	*	*	*	*	10.7	16.4	10.1
Trade, technical level	10.3	5.4	5.5	7.1	*	*	36.7	22.9	10.3
Without post-school qualifications(b)	35.0	19.4	21.6	16.0	14.8	29.4	136.2	30.0	11.2
Attended highest level of secondary school available	6.0	*	5.4	6.6	*	*	24.5	21.3	10.5
Did not attend highest level of secondary school available	28.4	15.8	16.3	11.7	12.5	26.2	110.9	31.8	11.4
Total(c)	51.8	29.3	34.0	25.4	21.5	35.0	196.9	26.8	10.6
PERSONS									
With post-school qualifications(a)	24.2	18.7	17.6	16.8	8.6	10.9	96.7	22.2	9.6
Degree or equivalent	*	5.2	5.9	*	*	*	19.6	17.8	9.7
Trade, technical level	18.9	13.1	11.4	13.6	6.9	8.9	72.8	24.0	9.9
Without post-school qualifications(b)	59.2	43.0	51.2	41.7	39.1	72.2	306.4	34.8	13.0
Attended highest level of secondary school available	9.7	8.4	13.6	9.3	*	7.9	53.2	24.0	11.1
Did not attend highest level of secondary school available	48.9	34.6	37.4	32.4	34.9	63.8	251.9	37.0	15.1
Still at school	5.6	*	6.7	*	*	*	19.3	11.7	8.7
Total	89.0	64.8	75.5	59.6	49.3	84.2	422.4	30.9	11.8

(a) Includes a small number of persons with other post-school qualifications. (b) Includes persons who never attended school. (c) Includes persons aged 15 years and over who were unemployed but still attending school.

TABLE 12. UNEMPLOYED PERSONS : EDUCATIONAL ATTAINMENT, AGE AND UNEMPLOYMENT RATE, FEBRUARY 1981

Educational attainment	Age group (years)						Total	Unemployment rate(a) per cent
	15-19	20-24	25-34	35-44	45-54	55 and over		
— '000—								
MALES								
With post-school qualifications(b)	*	12.7	13.2	5.7	6.2	5.4	45.4	2.6
Degree or equivalent	*		6.4	*	*	*	8.9	2.5
Trade, technical level	*	8.5	10.6	*	5.9	5.0	36.1	2.7
Without post-school qualifications(c)	59.1	40.5	28.9	13.9	16.6	11.2	170.2	6.8
Attended highest level of secondary school available	12.6	7.3	5.7	*	*	*	28.7	5.7
Did not attend highest level of secondary school available	46.5	33.2	23.3	13.4	14.7	9.9	141.0	7.1
Total(d)	71.2	53.2	42.1	19.6	22.7	16.6	225.5	5.3
FEMALES								
With post-school qualifications(b)	9.3	15.5	15.1	7.2	*	*	51.3	6.0
Degree or equivalent	*	4.6	5.4	*	*	*	10.7	6.9
Trade, technical level	7.9	10.7	9.7	5.2	*	*	36.7	5.5
Without post-school qualifications(c)	57.0	24.3	29.3	14.0	8.9	*	136.2	8.7
Attended highest level of secondary school available	10.8	6.2	5.5	*	*	*	24.5	8.2
Did not attend highest level of secondary school available	46.2	18.1	23.8	13.3	7.3	*	110.9	8.8
Total(d)	75.7	39.8	44.4	21.2	12.6	*	196.9	8.0
PERSONS								
With post-school qualifications(b)	11.5	28.2	28.3	12.9	9.9	5.9	96.7	3.7
Degree or equivalent	*	8.8	6.4	*	*	*	19.6	3.8
Trade, technical level	10.1	19.2	20.3	9.1	8.7	5.4	72.8	3.6
Without post-school qualifications(c)	116.1	64.8	58.2	27.9	25.4	13.9	306.4	7.5
Attended highest level of secondary school available	23.4	13.4	11.1	*	*	*	53.2	6.7
Did not attend highest level of secondary school available	92.7	51.3	47.1	26.7	22.0	12.0	251.9	7.8
Total(d)	146.9	93.0	86.6	40.8	35.3	19.8	422.4	6.3

(a) Unemployed persons as a proportion of persons in the labour force in the same group. (b) Includes a small number of persons with other post-school qualifications. (c) Includes persons who never attended school. (d) Includes persons aged 15 years and over who were unemployed but still attending school.

TECHNICAL NOTE

Estimation procedure

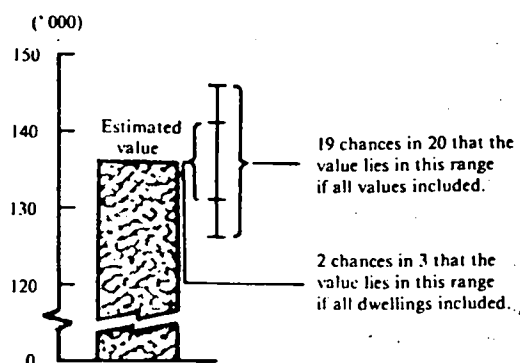
The estimates are derived from the population survey by use of a ratio estimation procedure which ensures that the survey estimates conform to an independently estimated distribution of the population for each capital city and remainder of state by age and sex, rather than to the corresponding distribution within the sample itself.

Reliability of the estimates

2. Since the estimates in this publication are based on information obtained from occupants of a sample of dwellings, they are subject to sampling variability; that is, they may differ from the figures that would have been produced if all dwellings had been included in the survey. One measure of the likely difference is given by the *standard error*, which indicates the extent to which an estimate might have varied by chance because only a sample of dwellings was included. There are about two chances in three that a sample estimate will differ by less than one standard error from the figure that would have been obtained if all dwellings had been included, and about nineteen chances in twenty that the difference will be less than two standard errors. Another measure of the likely difference is the *relative standard error*, which is obtained by expressing the standard error as a percentage of the estimate.

3. Space does not allow for the separate indication of the standard errors of all estimates in this publication. A table of standard errors for general application is given on the following page. Since they are averages based on calculations for a limited number of past surveys over a wide range of labour force characteristics these figures will not give a precise measure of the standard error of a particular estimate but they will provide an indication of its magnitude.

4. An example of the calculation and the use of standard errors in relation to estimates of persons is as follows. Table 12 on the previous page shows the estimated number of unemployed females in Australia without post-school qualifications is 136,200. Since this estimate is between 100,000 and 200,000 in the standard error table, the standard error for Australia will be between 4,500 and 5,900, and can be approximated as 5,000 (rounded to the nearest 100). Therefore there are about two chances in three that the value that would have been produced if all dwellings had been included in the survey will fall in the range 131,200 to 141,200 and about nineteen chances in twenty that the value will fall within the range 126,200 and 146,200. This example is illustrated in the following diagram.



5. As can be seen from the standard error table, *the smaller the estimate the higher is the relative standard error*. Very small estimates are thus subject to such high standard errors (relative to the size of the estimate) as to detract seriously from their value for most reasonable uses. In this publication, estimates less than the lowest levels shown in the standard error table have not been published. Although figures for these small components can in some cases be derived by subtraction, they should not be regarded as reliable.

6. The reliability of an estimated percentage or rate, computed by using sample data for both numerator and denominator, depends upon both the size of the numerator and the size of the denominator. For small percentages the relative standard error of the percentage is approximated by the relative standard error of the numerator, which may be obtained from the standard error table. For other percentages the relative standard error will be lower than that of the numerator.

7. Published figures may also be used to estimate the difference between two survey estimates (of numbers or percentages). Such a figure is itself an estimate and is therefore subject to sampling error. The sampling error of the difference between two estimates depends on their standard errors and the relationship (correlation) between them. An approximate standard error (SE) of the difference between two estimates ($x-y$) may be calculated by the following formula:

$$SE(x-y) = \sqrt{[SE(x)]^2 + [SE(y)]^2}$$

While this formula is strictly applicable only to differences between separate and uncorrelated characteristics or sub-populations, it is expected to provide a good approximation for all differences likely to be of interest in this publication.

8. An example of the use of the above formula is as follows: the difference between the estimates of unem-
ployed males and females in Australia without post-
school qualifications (Table 12) is 34,000 (170,200-
136,200). The standard error of this estimate may be
calculated as follows: from the table below the standard
error of the two original estimates can be approximated
as 5,500 and 5,000 respectively. Therefore, the standard
error of the difference (34,000) is $\sqrt{(5,400)^2 + (5,000)^2}$
or 7,400 (rounded to the nearest 100). Thus there are
about two chances in three that the difference that would
have been obtained if all dwellings had been included in
the survey is within the range 26,600 to 41,400 and about
nineteen chances in twenty that it is between 19,200 and
48,800.

9. The imprecision due to sampling variability, which
is measured by the standard error, should not be
confused with inaccuracies that may occur because of
imperfections in reporting by interviewers and respon-
dents. Inaccuracies of this kind are referred to as the
non-sampling error and they may occur in any enumer-
ation, whether it be a full count or only a sample. Every
effort is made to reduce the non-sampling error to a
minimum by careful design of questionnaires, intensive
training and supervision of interviewers and efficient
operating procedures.

STANDARD ERRORS OF ESTIMATES

Size of estimate	N.S.W.	Vic.	Qld	S.A.	W.A.	Tas.	N.T.	A.C.T.	Australia	
									— number —	Relative standard error (per cent)
1,500						350				
2,300				550	550	400	550	550		
3,000				650	650	450	650	600		
3,500			850	650	700	500	700	600		
4,000			900	700	700	500	700	650		
4,500			950	750	750	550	750	700	1100	24.9
5,000	1250	1250	1000	800	800	550	800	700	1200	23.6
6,000	1350	1350	1050	850	850	600	850	750	1300	21.5
7,000	1450	1400	1150	900	900	650	900	800	1400	19.9
10,000	1700	1650	1350	1050	1050	750	1050	850	1650	16.5
20,000	2350	2200	1750	1350	1400	950	1350	1050	2250	11.3
50,000	3400	3100	2500	1850	1900	1250	1900	1300	3400	6.8
100,000	4450	4000	3250	2350	2400	1450	2450	1450	4500	4.5
200,000	5750	5050	4100	2950	2950	1750		1600	5900	2.9
300,000	6650	5700	4700	3300	3300				6850	2.3
500,000	7900	6650	5550	3850	3800				8250	1.6
1,000,000	9800	8050	6850						10400	1.0
2,000,000	12000	9650							13000	0.7
5,000,000	15350	11850							17050	0.4

— Estimates below the levels indicated have not been published, see paragraph 5 above.